

# One Stop Target-to-Hit Solutions at HitS

## WuXi AppTec HitS - Fast Track Services

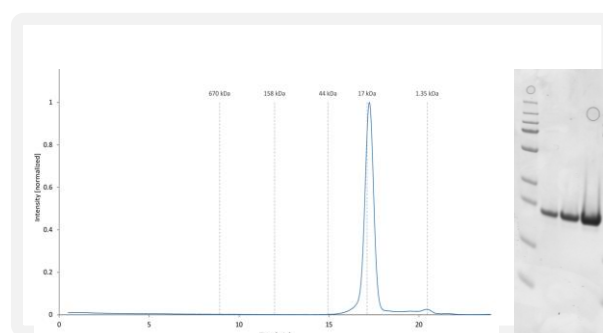
Established Systems • Easy Access • Flexible • Cost-Effective • Fast Turnaround Time

# K-RAS

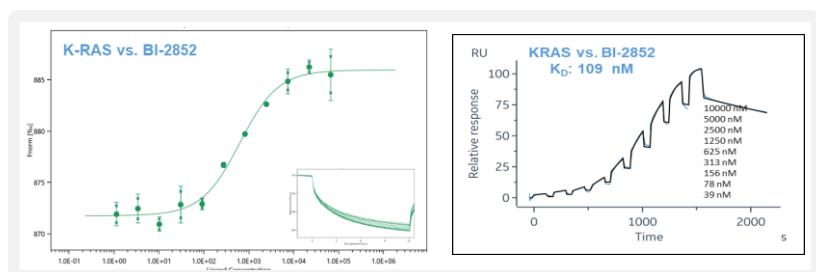
### PRIME PROTEIN Production

Broad variety of different constructs available, e.g.:

- Wildtype, G12C, G12D, G12V, and G13D
- Variants pre-loaded with GDP or non-hydrolysable GTP analogs like GTP $\gamma$ S or GMPPNP
- Various “Cys-light” variants for covalent inhibitor discovery
- Interaction partners like SOS1 and Raf1 available
- Proteins available in stock



Protein QC for K-Ras:  
Analytical SEC and Coomassie stained gel



Biophysical characterization of K-RAS: MST (left) and SPR (right)

### WuXi RTG Assay

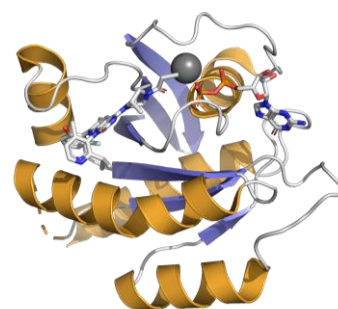
Various biophysical and biochemical assays available:

- MST, SPR, nanoDSF, and nucleotide exchange assay
- Two-week turnaround time

### WuXi Xpress Crystallization

Diverse crystallization systems established:

- Variety of different K-RAS constructs
- With bound covalent or non-covalent inhibitor
- GDP and non-hydrolysable GTP analog bound states
- Two-month turnaround time



K-RAS G12C with bound AMG-510

**Contact us for more capabilities and attractive work model**

# One Stop Target-to-Hit Solutions at HitS

## WuXi AppTec HitS - Fast Track Services

Established Systems • Easy Access • Flexible • Cost-Effective • Fast Turnaround Time

### Protein Production

Scan the QC code or click the link below to see the full list of stocked proteins  
<https://hits.wuxiapptec.com/solution-protein-list>



Our established Ready-To-Go Assays:

Target	UniProt ID	Protein Production	MST/TRIC	nanoDSF	SPR	X-ray crystallography	Biochemical Assay
BLM	P54132	✓	✓	✓	–		
CCNA2/CDK2 Complex	P24864/ P24941	✓	✓	✓	✓	✓	
CCNE1/CDK2 Complex	P24864/ P24941	✓	✓	✓	✓	✓	
CDK7	P50613	✓	✓	✓	–		ADP Glo
CRBN/DDB1	Q96SW2/Q16531	✓	✓	✓	–		
cREL	Q96HD1	✓	✓	✓	–		
DOCK5	Q9H7D0	✓	✓	✓	–		Nucleotide Exchange
EGFR	P00533	✓	✓	✓	–	✓	ADP Glo
GRB2	P62993	✓	✓	✓	–	✓	
KRAS	P01116	✓	✓	✓	✓	✓	Nucleotide Exchange
MALT1	Q9UDY8	✓	✓	✓	on-going	✓	
MAP4K1	Q92918	✓	✓	✓	on-going	✓	
NLRP3	Q96P20	✓	✓	✓	✓		ADP Glo
NRAS	P01111	✓	✓	✓	✓		Nucleotide Exchange
p38	Q15759	✓	✓	✓	✓	✓	
PIK3CA/PIK3R1 Complex	P42336/ P27986	✓	✓	✓	✓		ADP Glo
PoIQ	O75417	✓	✓	✓	✓		
PRMT5/WDR77	O14744 / Q9BQA1	✓	✓	✓	✓	✓	
SHP2	Q06124	✓	✓	✓	–		
SIK3	Q9Y2K2	✓	✓	✓	–	✓	
SLC2A1 (GLUT1)	P11166	✓	✓	✓	–		
SMARCA2	P51531	✓	✓	✓	–	✓	ADP Glo
SOS1	Q07889	✓	✓	✓	–	✓	Nucleotide exchange
STAT6	P42226	✓	✓	✓	✓	✓	
STAT3	P40763	✓	–	✓	✓		
STAT4	Q14765	✓	–	✓	✓		
STING	Q86WV6	✓	✓	✓	✓	✓	
TCEB1/TCEB2/VHL Complex	Q15369/ Q15370/ P40337	✓	✓	✓	✓	✓	
USP7	Q93009	✓	✓	✓	✓	✓	
WEE1	P30291	✓	✓	✓	–	✓	
WRN	Q14191	✓	✓	✓	✓		DNA unwinding assay

### WuXi Xpress Crystallization

Scan the QC code or click the link below to see the full list of stocked proteins  
<https://hits.wuxiapptec.com/solution-crystallography>



HitS web



LinkedIn

[HitS\\_CR@wuxiapptec.com](mailto:HitS_CR@wuxiapptec.com)  
[Crelux\\_CR@wuxiapptec.com](mailto:Crelux_CR@wuxiapptec.com)

<https://hits.wuxiapptec.com>  
[www.crelux.com](http://www.crelux.com)

WuXi AppTec HitS



a WuXi AppTec company